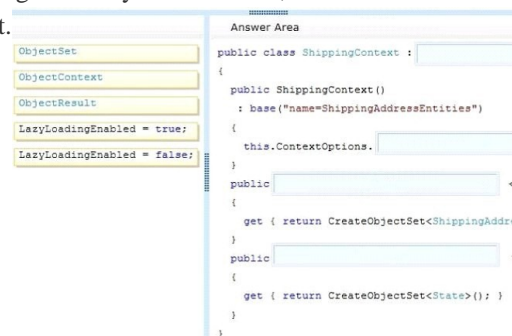


## [2016-New Free Download Of GreatExam 70-492 Real Exam Questions (76-90)]

There are many companies that provide 70-492 braindumps but those are not accurate and latest ones. Preparation with GreatExam 70-492 practice test study guide is a best way to pass this certification exam in easy way. QUESTION 76 You need to regenerate the service proxies to include task-based asynchronous method signatures. Which command should you use? A. `aspnet_regiis.exe /t:codehttp://localhost:62965/UploadCallbackService.svc` B. `svcutil.exe /t:codehttp://localhost:62965/UploadCallbackService.svc` C. `aspnet_compiler.exe /t:codehttp://localhost:62965/UploadCallbackService.svc` D. `aspnet_regiis.exe /t:codehttp://localhost:62965/UploadService.svc` E. `svcutil.exe /t:codehttp://localhost:62965/UploadService.svc` Answer: B Explanation: <http://msdn.microsoft.com/en-us/library/aa347733.aspx> QUESTION 77 Drag and Drop Question You need to create the ShippingContext class in the ShippingAddress.es file to meet the requirements. What should you do? (To answer, drag the appropriate code segments to the correct location or locations in the answer area. Each code segment may be used once, more than once, or not at all. You may need to drag the split bar between panes or scroll to view content.



Answer



www.greatexam.com

QUESTION 78 The DeleteExternalOrder() method in the ExternalQueueService service is not throwing a FaultException exception as defined by the FaultContractAttribute attribute in the IExternatQueueService.cs file. You need to throw the FaultException exception. Which code segment can you insert at line EQ45 to achieve this goal? (Each correct answer presents a complete solution. Chose all that apply.)

- ☐ A. `string queryString = @"SELECT q.OrderNum, q.VendorId, q.FilePath, q.OrderValue  
FROM ExternalOrdersEntities.InboundQueues AS q WHERE q.OrderNum = @orderNum";`
- ☐ B. `string queryString = @"SELECT * FROM ExternalOrdersEntities.InboundQueues  
WHERE OrderNum = @orderNum";`
- ☐ C. `string queryString = @"SELECT VALUE q FROM ExternalOrdersEntities.InboundQueues AS q  
WHERE q.OrderNum = @orderNum";`
- ☐ D. `string queryString = @"SELECT VALUE FROM ExternalOrdersEntities.InboundQueues  
WHERE OrderNum = @orderNum";`

www.greatexam.com

A. Option AB. Option BC. Option CD. Option D Answer: C QUESTION 79 You need to modify the ExecuteCommandProcedure() method to meet the technical requirements. Which code segment should you use?

C A

```
private async Task ExecuteCommandProcedure(EntityCommand command)
{
    using (EntityConnection connection = new EntityConnection
    ("name=ExternalOrdersEntities"))
    {
        command.Connection = connection;
        await connection.OpenAsync();
        await command.ExecuteNonQueryAsync();
    }
}
```

C B

```
private void ExecuteCommandProcedure(EntityCommand command)
{
    using (EntityConnection connection = new EntityConnection
    ("name=ExternalOrdersEntities"))
    {
        command.Connection = connection;
        command.ExecuteNonQuery();
    }
}
```

C C

```
private void ExecuteCommandProcedure(EntityCommand command)
{
    using (EntityConnection connection = new EntityConnection
    ("name=ExternalOrdersEntities"))
    {
        command.Connection = connection;
        connection.OpenAsync();
        command.ExecuteNonQuery();
    }
}
```

C D

```
private async Task ExecuteCommandProcedure(EntityCommand command)
{
    using (EntityConnection connection = new EntityConnection
    ("name=ExternalOrdersEntities"))
    {
        command.Connection = connection;
        connection.OpenAsync();
        command.ExecuteNonQuery();
    }
}
```

www.greatexam.com

A. Option AB. Option BC. Option CD. Option D Answer: A QUESTION 80Drag and Drop QuestionYou need to complete the GetProcessedOrders() action in the ProcessedOrderController controller to meet the requirements.What should you do? (To answer, drag the appropriate code segments to the correct location or locations in the answer area. Each code segment may be used once, more than once, or not at all. You may need to drag the split bar between panes or scroll to view content.

Answer Area

OrderByDescending

OrderBy

Take

ProcessedOrders

ProcessedDateTime

```
public ActionResult GetProcessedOrders()
{
    using (var context = new ProcessedOrders())
    {
        List<Entities.ProcessedOrder> orders =
            context
                .ProcessedOrders
                .OrderByDescending(i => ProcessedDateTime)
                .Take(10)
                .ToList();
        return View(orders);
    }
}
```

www.greatexam.com

Answer

OrderByDescending

OrderBy

Take

ProcessedOrders

ProcessedDateTime

```
public ActionResult GetProcessedOrders()
{
    using (var context = new ProcessedOrders())
    {
        List<Entities.ProcessedOrder> orders =
            context
                .ProcessedOrders
                .OrderByDescending(i => ProcessedDateTime)
                .Take(10)
                .ToList();
        return View(orders);
    }
}
```

www.greatexam.com

QUESTION 81Drag and Drop QuestionThe GetExternalOrders() method must use members of the EntityClient namespace to

query the database for all records in the InboundQueue entity. You need to modify the GetExternalOrders() method to return the correct data. What should you do? (To answer, drag the appropriate code segments to the correct location or locations in the answer area. Each code segment may be used once, more than once, or not at all. You may need to drag the split bar between panes or scroll to view content.)

ExecuteReader

ExecuteScalar

SequentialAccess

KeyInfo

ExternalOrders

ExternalOrdersEntities

Answer Area

```
public List<Entities.InboundQueue> GetExternalOrders()
{
    EntityConnection connection =
        new EntityConnection("name=" +
            connection.Open();
            EntityCommand cmd = connection.CreateCommand();
            cmd.CommandText = @"select q.OrderNum, q.VendorId,
            q.FilePath, q.OrderValue
            from
            EntityDataReader rdr =
            cmd.
            List<InboundQueue> queueItems = new List<InboundQueue>();
            while (rdr.Read
            {
                InboundQueue queueItem = new InboundQueue();
                queueItem.OrderNum = Convert.ToInt32(rdr["OrderNum"]);
                queueItem.VendorId = Convert.ToInt32(rdr["VendorId"]);
                queueItem.FilePath = rdr["FilePath"].ToString();
                queueItem.OrderValue = Convert.ToDecimal(rdr["OrderValue"]);
                queueItems.Add(queueItem);
            }
            rdr.Close
            connection.Close
            return queueItems;
        }
```

www.greatexam.com

Answer

ExecuteReader

ExecuteScalar

SequentialAccess

KeyInfo

ExternalOrders

ExternalOrdersEntities

Answer Area

```
public List<Entities.InboundQueue> GetExternalOrders()
{
    EntityConnection connection =
        new EntityConnection("name=" +
            connection.Open();
            EntityCommand cmd = connection.CreateCommand();
            cmd.CommandText = @"select q.OrderNum, q.VendorId,
            q.FilePath, q.OrderValue
            from
            EntityDataReader rdr =
            cmd.
            List<InboundQueue> queueItems = new List<InboundQueue>();
            while (rdr.Read
            {
                InboundQueue queueItem = new InboundQueue();
                queueItem.OrderNum = Convert.ToInt32(rdr["OrderNum"]);
                queueItem.VendorId = Convert.ToInt32(rdr["VendorId"]);
                queueItem.FilePath = rdr["FilePath"].ToString();
                queueItem.OrderValue = Convert.ToDecimal(rdr["OrderValue"]);
                queueItems.Add(queueItem);
            }
            rdr.Close
            connection.Close
            return queueItems;
        }
```

www.greatexam.com

QUESTION 82 Drag and Drop Question You need to modify the ExecuteCommandProcedure() method to meet the technical requirements. Which code segment should you use?

await connection.OpenAsync();

await command.ExecuteNonQueryAsync();

connection.OpenAsync();

command.OpenAsync();

await command.QueryAsync();

Answer Area

```
private async Task ExecuteCommandProcedure(EntityCommand command)
{
    using (EntityConnection connection
        = new EntityConnection("name=ExternalOrdersEntities"))
    {
        command.Connection = connection;
    }
}
```

www.greatexam.com

Answer

await connection.OpenAsync();

await command.ExecuteNonQueryAsync();

connection.OpenAsync();

command.OpenAsync();

await command.QueryAsync();

Answer Area

```
private async Task ExecuteCommandProcedure(EntityCommand command)
{
    using (EntityConnection connection
        = new EntityConnection("name=ExternalOrdersEntities"))
    {
        command.Connection = connection;
    }
}
```

www.greatexam.com

QUESTION 83 The QueueDetail entity type must inherit from the InboundQueue entity type in the ExternalQueue service project using table-per-type inheritance. You need to modify the entities in the designer. What should you do? (Each correct answer presents part of the solution. Choose all that apply.) A. Remove the OrderNum property in InboundQueue. B. Remove the OrderNum property in QueueDetail. C. Set the QueueDetail BaseType to InboundQueue. D. Remove the association between the entities. E. Right-click the entities and validate the table mapping. F. Set the InboundQueue BaseType to QueueDetail. Answer: BCDE

Explanation:<http://www.robbagby.com/entity-framework/entity-framework-modeling-table-per-type-inheritance/> Case Study 5 - Flight Information Consolidation (QUESTION 84 - QUESTION 98)BackgroundYou are developing a flight information consolidation service. The service retrieves flight information from a number of sources and combines them into a single data set. The consolidated flight information is stored in a SQL Server database. Customers can query and retrieve the data by using a REST API provided by the service. The service also offers access to historical flight information. The historical flight information can be filtered and queried in an ad hoc manner. The service runs on a Windows Azure Web Role. SSL is not used. Business Requirements- A new data source for historical flight information is being developed by a contractor located on another continent.- If a time zone is not specified, then it should be interpreted as Coordinated Universal Time (UTC).- When you upgrade a service from a staging deployment to a production deployment, the time that the service is unavailable must be minimized.- The default port must be used for HTTP. Technical RequirementsThe existing sources of flight information and the mechanism of exchange are listed below.- Blue Yonder Airlines provides flight information in an XML file.- Consolidated Messenger provides flight information in a Microsoft Access database that is uploaded every 12 hours to the service using SFTP. The company uses port 22 for SFTP.- Margie's Travel provides and consumes flight information using serialized ADO.NET DataSets.- Data is periodically synced between the service and Margie's Travel.- Trey Research provides data from multiple sources serialized in proprietary binary formats. The data must be read by using .NET assemblies provided by Trey Research. The assemblies use a common set of dependencies. The current version of the Trey Research assemblies is 1.2.0.0. All assemblies provided by Trey Research are signed with a key pair contained in a file named Trey.snk, which Trey Research also supplies.- The application specification requires that any third-party assemblies must have strong names

#### Application Structure

##### FlightInfo.cs

```
public class FlightInfo
{
    string DataSource { get; set; }
    public string Airline { get; set; }
    public string Flight { get; set; }
    public DateTimeOffset Arrival { get; set; }
    public int Seats { get; set; }
    public bool WasLate { get; set; }
}
```

##### BlueYonderLoader.cs

```
public class BlueYonderLoader
{
    public IEnumerable<RawFlightData> LoadFlights(XDocument feed)
    {
        ...
    }

    private RawFlightData Parse(XElement flightElement)
    {
        ...
    }
}
```

[www.greatexam.com](http://www.greatexam.com)

##### HistoricalDataLoader.cs

```
public class HistoricalDataLoader
{
    public static IEnumerable<HistoricalFlightInfo> LoadHistoricalFlights()
    {
        ...
    }

    public void StreamHistoricalFlights(XmlWriter responseWriter, string airline)
    {
        ...
    }

    private XElement ConvertToHistoricalFlight(XElement flight)
    {
        return new XElement("Flight", flight);
    }

    private string GetAirline(XElement flightName)
    {
        return flightName.Value.Substring(0, 2);
    }

    IEnumerable<XElement> RemoteDataStream()
    {
        return XDocument.Load("").Elements();
    }
}
```

[www.greatexam.com](http://www.greatexam.com)

### MargiesTravelSync.cs

```
public class MargiesTravelSync
{
    public void Sync()
    {
        ...
    }

    private DataSet LoadLocal()
    {
        var dataSet = new DataSet();
        dataSet.ReadXml("local");
        return dataSet;
    }

    private StreamWriter SendStream()
    {
        return new StreamWriter("SendStream");
    }

    private StreamReader ReceiveStream()
    {
        return new StreamReader("ReceiveStream");
    }
}
```

www.greatexam.com

### FlightInfoContext.cs

```
public class FlightInfoContext : DbContext
{
    public DbSet<FlightInfo> FlightInfo { get; set; }

    public override int SaveChanges()
    {
        return base.SaveChanges();
    }

    private bool IsTransient(int ex)
    {
        var errors = new[] { 10053, 10054, 64 };
        return errors.Contains(ex);
    }
}
```

### FlightDataController.cs

```
public class FlightDataController : ApiController
{
    FlightInfoContext _Context;

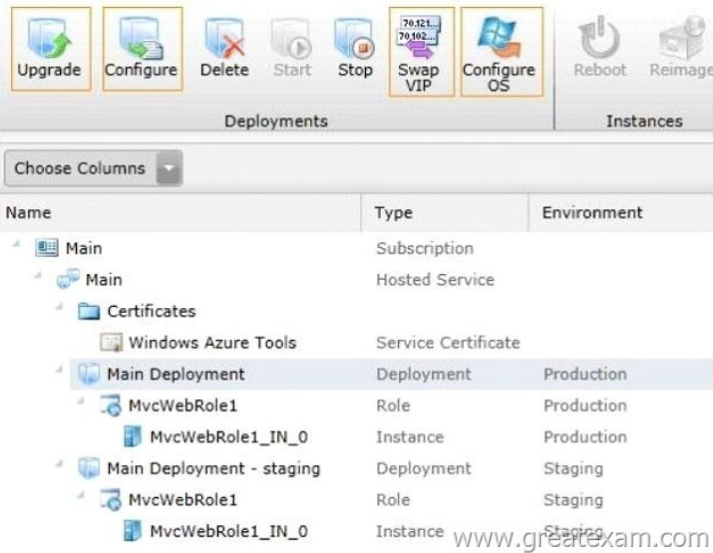
    public FlightDataController()
    {
        _Context = new FlightInfoContext();
    }

    [HttpGet]
    public IEnumerable<FlightInfo> GetFlightInfo()
    {
        return _Context.FlightInfo.Select(x => x).AsEnumerable();
    }

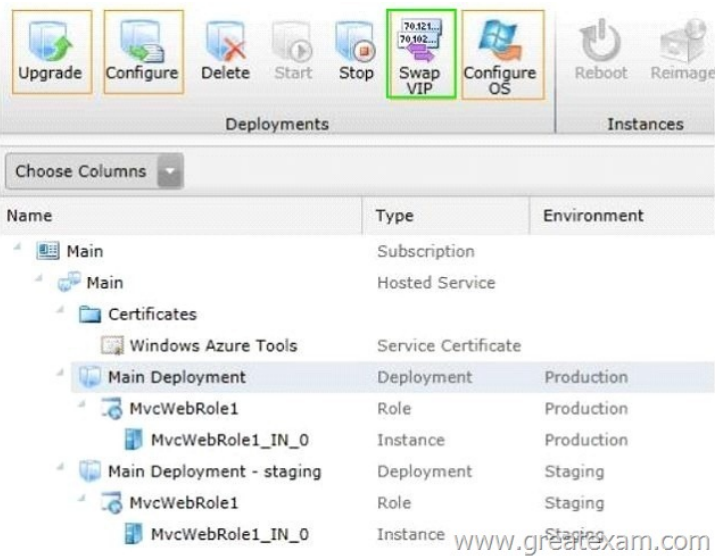
    private IEnumerable<HistoricalFlightInfo> LoadHistorical()
    {
        return HistoricalDataLoader.LoadHistoricalFlights();
    }
}
```

www.greatexam.com

QUESTION 84 Hotspot Question You need to deploy the application to the Windows Azure production environment to meet the business requirements. What should you do? (To answer, select the appropriate button in the answer area.)



Answer



QUESTION 85 Drag and Drop Question Historical flight information data will be stored in Windows Azure Table Storage using the FlightInfo class as the table entity. There are millions of entries in the table. Queries for historical flight information specify a set of airlines to search and whether the query should return only late flights. Results should be ordered by flight name. You need to specify which properties of the FlightInfo class should be used at the partition and row keys to ensure that query results are returned as quickly as possible. What should you do? (To answer, drag the appropriate properties to the correct location or locations in the answer area. Each property may be used once, more than once, or not at all. You may need to drag the split bar between panes or scroll to view content.)

Answer Area

|         |   |
|---------|---|
| Airline | Use the <input type="text"/> property as the partition key. |
| WasLate |   |
| Flight  | Use the <input type="text"/> property as the row key.       |
| Arrival |   |

Answer

Answer Area

|         |   |
|---------|---|
| Airline | Use the <input type="text"/> property as the partition key. |
| WasLate |   |
| Flight  | Use the <input type="text"/> property as the row key.       |
| Arrival |   |

QUESTION 86 Drag and Drop Question The service has been deployed to Windows Azure. Trey Research has provided version 1.3.0.0 of the assembly to support a change in the serialization format. The service must remain available during the transition to the new serialization format. You need to ensure that the service is using the new assembly. Which configuration setting should you add to the web.config? (To answer, drag the appropriate configuration elements to the correct location or locations in the answer area. Each configuration element may be used once, more than once, or not at all. You may need to drag the split bar between panes or scroll to view content.)

codeBase version="1.3.0.0" href="Trey.Serialization.dll"

bindingRedirect oldVersion="1.2.5.0" newVersion="1.3.0.0"

bindingRedirect oldVersion="1.2.0.0" newVersion="1.3.0.0"

runtime

location

< >

<assemblyBinding xmlns="urn:schemas-microsoft-com:asm.v1">  
<dependentAssembly>  
<assemblyIdentity name="Trey.Serialization" />  
  
< >  
  
</dependentAssembly>  
</assemblyBinding>

</ >

www.greatexam.com

Answer

codeBase version="1.3.0.0" href="Trey.Serialization.dll"

bindingRedirect oldVersion="1.2.5.0" newVersion="1.3.0.0"

bindingRedirect oldVersion="1.2.0.0" newVersion="1.3.0.0"

runtime

location

< runtime >

<assemblyBinding xmlns="urn:schemas-microsoft-com:asm.v1">  
<dependentAssembly>  
<assemblyIdentity name="Trey.Serialization" />  
  
< codeBase version="1.3.0.0" href="Trey.Serialization.dll" >  
  
</dependentAssembly>  
</assemblyBinding>

</ runtime >

www.greatexam.com

QUESTION 87 The assemblies provided by Trey Research must be merged into a single assembly. You need to merge the assemblies provided by Trey Research and meet the application specification. What should you do? A. Use the ILMerge.exe tool to merge the Trey Research assemblies without stipulating a keypair. B. In the post-build event, use the Assembly Linker (al.exe) tool to sign the application's primary output assembly with the Trey.snk key pair. C. Use the sn.exe tool to generate a key pair file named TreyVendor.snk. Use the ILMerge.exe tool to merge the assemblies provided by Trey Research. Use the Assembly Linker (al.exe) tool to sign the application's primary output assembly with the TreyVendor.snk key pair. D. Use the ILMerge.exe tool to merge the assemblies provided by Trey Research, and then stipulate the output must be signed with the Trey.snk key pair. Answer: D

QUESTION 88 Errors occasionally occur when saving data using the FlightInfoContext ADO.NET Entity Framework context.

Updates to the data are being lost when an error occurs. You need to ensure that data is still saved when an error occurs by retrying the operation. No more than five retries should be performed. With which code segment should you replace the body of the SaveChanges() method in the FlightInfoContext.es file?

A. 

```
var result = FlightInfo.SqlQuery("UPDATE WITH RETRY", FlightInfo, "IsTransient", 5);
if (result.Count() > 5)
{
    result.AsNoTracking();
    return -1;
}
return 0;
```

B. 

```
var exception = new EntitySQLException();
while (exception.HResult != 0 && exception.Data.Count < 5)
{
    try
    {
        return base.SaveChanges();
    }
    catch (EntitySQLException ex)
    {
        if (IsTransient(ex.HResult))
        {
            exception = ex;
        }
    }
}
return base.SaveChanges();
```

www.greatexam.com

C. 

```
for (var i = 0; i < 5; i++)
{
    try
    {
        return base.SaveChanges();
    }
    catch (SqlException ex)
    {
        if (IsTransient(ex.Number))
        {
            continue;
        }
    }
}
return base.SaveChanges();
```

D. 

```
try
{
    return base.SaveChanges();
}
catch (EntityCommandExecutionException ex)
{
    if (ex.Data.Keys.Cast<int>().Any(x => IsTransient(x)))
    {
        return 5 & SaveChanges();
    }
    return -1;
}
```

www.greatexam.com

A. Option AB. Option BC. Option CD. Option D Answer: C Explanation: EntitySQLException: Represents errors that occur when parsing Entity SQL command text. This exception is thrown when syntactic or semantic rules are violated. SqlException: The exception that is thrown when SQL Server returns a warning or error. This class cannot be inherited.

EntityCommandExecutionException : Represents errors that occur when the underlying storage provider could not execute the specified command. This exception usually wraps a provider-specific exception. QUESTION 89 Data provided by Consolidated Messenger is cached in the HttpContext.Cache object. You need to ensure that the cache is correctly updated when new data arrives. What should you do? A. Ensure that the EffectivePrivateBytesLimit value is greater than the size of the database file. B. Use the CacheDependency type configured to monitor the SFTP target folder. C. Change the sliding expiration of the cache item to 12 hours. D. Use the SqlCacheDependency type configured with a connection string to the database file. Answer: B QUESTION 90 You need to load flight information provided by Consolidated Messenger. Which should you use? A. SQL Server Data Transformation Services (DTS) B. EntityTransaction and EntityCommand C. Office Open XML D. OleDbConnection and OleDbDataReader Answer: D We give you the proper and complete training with free 70-492 GreatExam updates. Our braindumps will defiantly make you perfect to that level you can easily pass the exam in first attempt.

<http://www.greatexam.com/70-492-exam-questions.html>